



WUI25

B&C ID.205 50/50

FiftyFifty Sweatshirt Quality

B&C
BE INSPIRED

Composition

B&C, NOW sourcing 100% More Sustainable fibres for all cotton-based products

50% ring spun Cotton (investing in Better Cotton*) / 50% Recycled Polyester - RCS certified

By buying this product from B&C you're supporting responsible cotton production through Better Cotton.

Size

XS, S, M, L, XL, 2XL

Packing

10 pcs/pack & 30 pcs/carton

Weight

270 g/m²

Details

B&C, NOW sourcing 100% More Sustainable fibres for all cotton-based products

This hooded full zip sweatshirt features a soft and qualitative 50% cotton - 50% polyester fabric and the "B&C No Label" solution for easy rebranding. Its regular fit assures the perfect balance of long-lasting comfort and a contemporary silhouette. The B&C ID.205 50/50 is a unisex style designed to fit both men and women.

Available in standard range of colours at the best price/value proposition.

- Hood
- Covered full zip
- Long lasting qualitative tone-on-tone coil full zip with metal slider and puller
- Contemporary look designed for all types off activity
- Bottom hem and cuffs with 1x1 elastane rib for a perfect fit
- Kangaroo pocket
- Two panels lined hood with tone-on-tone tubular drawcord
- Regular fit
- Set-in sleeves
- Side seams
- "B&C No Label" solution for easy rebranding

Colors



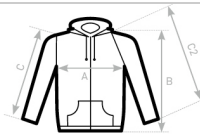
Sustainability



Care instructions



All our products are tested and approved using all main print techniques.



C= SET-IN SLEEVE
C2= RAGLAN SLEEVE

B&C ID.205 50/50 WU I25	XS	S	M	L	XL	2XL	3XL	4XL
A HALF CHEST	48	51,5	55	58,5	62	65,5	-	-
B BODY LENGTH FROM NECK POINT	64	66	68	70	72	74	-	-
C SLEEVE LENGTH	59,5	60,5	61,5	62,5	63,5	64,5	-	-

**B&C USES ONLY RESPONSIBLY
SOURCED FIBRES FOR ALL T-
SHIRTS, POLO SHIRTS AND
SWEATSHIRTS.**

View on the website

