




About

- Made from a blend of responsible materials.
- Breathable and hard-wearing fabric.
- No label: 100% customisable for your project.

60% TENCEL™* Lyocell/40% organic cotton *TENCEL™ is a trademark of Lenzing AG Oversize fit Enzyme-washed. Garment washed after assembly: colours may vary slightly Tone-on-tone recycled plastic buttons Added button placket Low-cut shirt Two flap patch pockets on the chest Panel on back Drop hem Side slits

 125 g/m² 

Sizes

 XS - S - M - L - XL

More information

Logistic

Country of origin

Customs code

 1

 25



BD - Bangladesh



62064000

Washing instructions



Colours



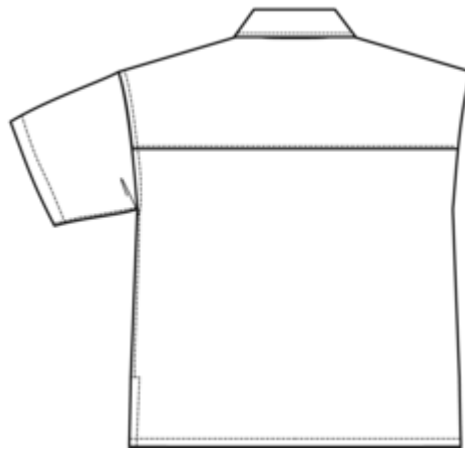
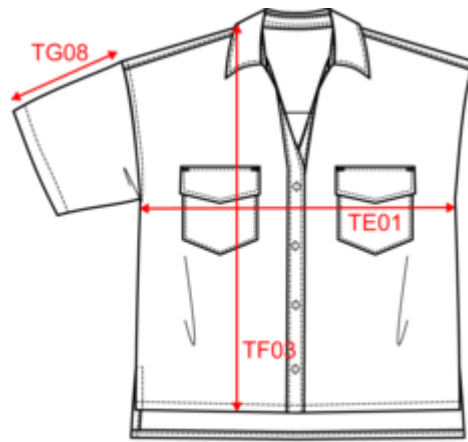
Certifications



NS514

Ladies' oversized shirt with Lyocell TENCEL™

Dimensions (cm)




Measurements in cm	XS	S	M	L	XL
TE01 - 1/2 chest width at 1.5cm below armhole	57.00	60.00	63.00	66.00	69.00
TF03 - Front total height from HSP	57.00	59.00	61.00	63.00	65.00
TG08 - Short sleeve length (rib excluded)	12.00	12.75	13.50	14.25	15.00

NS514

Ladies' oversized shirt with Lyocell TENCEL™

Colours information

 **Washed Dark Navy**
 RVB : 39,40,49
 Pantone C : 426C
 Pantone TCX : 19-4011TCX

 **Washed Organic Khaki**
 RVB : 85,89,77
 Pantone C : 418C
 Pantone TCX : 19-0312TCX

 **Washed white**
 RVB : 240,238,248
 Pantone C : Cool Gray 1C
 Pantone TCX : 13-4105TCX

Logistic



1



25

Sizes	Width (cm)	Height (cm)	Length (cm)	Net weight (kg)	Gross weight (kg)	Pieces/Box	Pieces/Bundle
XS	40.00	17.00	60.00	6.60000	8.00000	25	0
S	40.00	17.00	60.00	6.60000	8.00000	25	0
M	40.00	17.00	60.00	6.60000	8.00000	25	0
L	40.00	17.00	60.00	6.60000	8.00000	25	0
XL	40.00	17.00	60.00	6.60000	8.00000	25	0