



**About**

- Heavy grammage for a good fit.
- No label: 100% customisable for your project.
- Perfectly smooth surface for optimum customisation.

100% organic cotton. Combed cotton. Regular fit with dropped shoulders. Unbrushed 3-yarn fleece in French Terry. 1/2 circle in the back. Enzyme-washed. 2 x 1 rib neckline, cuffs and bottom hem, tubular assembly for a better finish. Tone-on-tone jersey taped neck inside the neckline. Twin needle finish on the shoulders, armholes, cuffs and bottom hem.

 400 g/m<sup>2</sup> 

**Sizes**

 XXS XS S M L XL XXL 3XL

**More information**

**Logistic**

 5

**Country of origin**

 15



BD - Bangladesh

**Customs code**



61102099

**Colours**

 Black

 Ivory

 Navy Blue

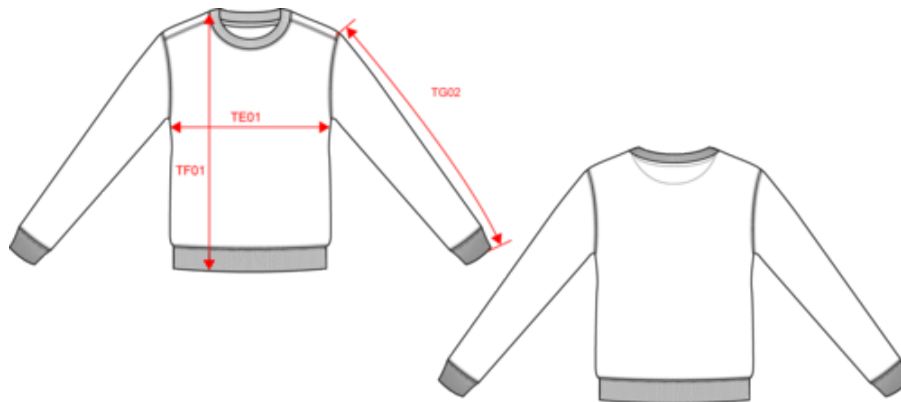
**Certifications**



## NS430

Unisex eco-friendly French Terry dropped shoulders round neck sweatshirt

Dimensions (cm)



Measurements in cm	XXS	XS	S	M	L	XL	XXL	3XL
TE01 - 1/2 chest width at 1.5cm below armhole	48.00	51.00	54.00	57.00	60.00	63.00	66.00	69.00
TF01 - Total height from HSP	66.00	68.00	70.00	72.00	74.00	76.00	78.00	80.00
TG02 - Long sleeve length	57.50	58.50	59.50	60.50	61.50	62.50	63.50	64.50

# NS430

## Unisex eco-friendly French Terry dropped shoulders round neck sweatshirt

### Colours information



**Black**  
 RVB : 35,35,37  
 Pantone C : Black  
 Pantone TCX : 19-4004TCX



**Ivory**  
 RVB : 239,231,216  
 Pantone C : 482C  
 Pantone TCX : 11-0606TCX



**Navy Blue**  
 RVB : 46,50,63  
 Pantone C : 432C  
 Pantone TCX : 19-4009TCX

### Logistic



5



15

Sizes	Width (cm)	Height (cm)	Length (cm)	Net weight (kg)	Gross weight (kg)	Pieces/Box	Pieces/Bundle
XXS	40.00000	18.00000	60.00000	6.60000	7.90000	15	0
XS	40.00000	18.00000	60.00000	7.60000	8.90000	15	0
S	40.00000	18.00000	60.00000	8.10000	9.40000	15	0
M	40.00000	18.00000	60.00000	8.70000	10.00000	15	0
L	40.00000	20.00000	60.00000	9.20000	10.50000	15	0
XL	40.00000	20.00000	60.00000	9.70000	11.00000	15	0
XXL	40.00000	20.00000	60.00000	10.50000	11.80000	15	0
3XL	40.00000	22.00000	60.00000	11.00000	12.30000	15	0