

B&C BLACK TIE SSL /WOMEN > SW P24

THE SHIRT CULTURE
BE INSPIRED



FITTED

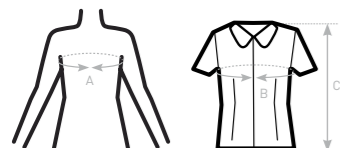
- Stretch poplin
- Soft feminine collar
- Cross stitched mother-of-pearl effect buttons
- Folded hem sleeves
- Darts at bustline & back panel for a feminine shape
- Horizontal last buttonhole
- Curved bottom hem



- 97% **combed** cotton - 3% elastane
- Poplin
- 135 g/m² **STRETCH**
- XS > 4XL
- 1 pc/pack & 10 pcs/carton



DUO CONCEPT
with B&C Black Tie SSL / men



SIZES [CM]

	US	XS	S	M	L	XL	XXL	XXXL	4XL	5XL	6XL
FR	36	38	40	42	44	46	48	50	-	-	-
IT	40	42	44	46	48	50	52	54	-	-	-
EU	34	36	38	40	42	44	46	48	-	-	-
UK	8	10	12	14	16	18	20	22	-	-	-
B CHEST SIZE	CM	88	93	98	103	108	113	118	123	-	-
C CENTER BACK LENGTH	CM	65	66	67	68	69	70	71	72	-	-



CONFIDENCE IN TEXTILES
Tested for harmful substances
according to Oeko-Tex® Standard 100
150 0003 Certesbel

STRETCH WOMEN'S SHORT SLEEVED EASY CARE POPLIN SHIRT

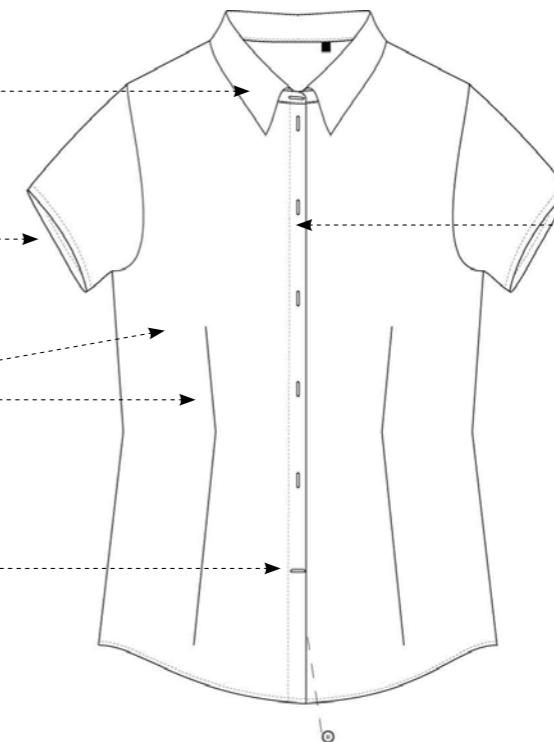
SOFT FEMININE COLLAR

FOLDED HEM SLEEVE

DARTS AT BUSTLINE AND FRONT PANEL

HORIZONTAL LAST BUTTONHOLE

CROSS STITCHED MOTHER-OF-PEARL EFFECT BUTTONS



DARTS AT BACK PANEL

CURVED BOTTOM HEM

